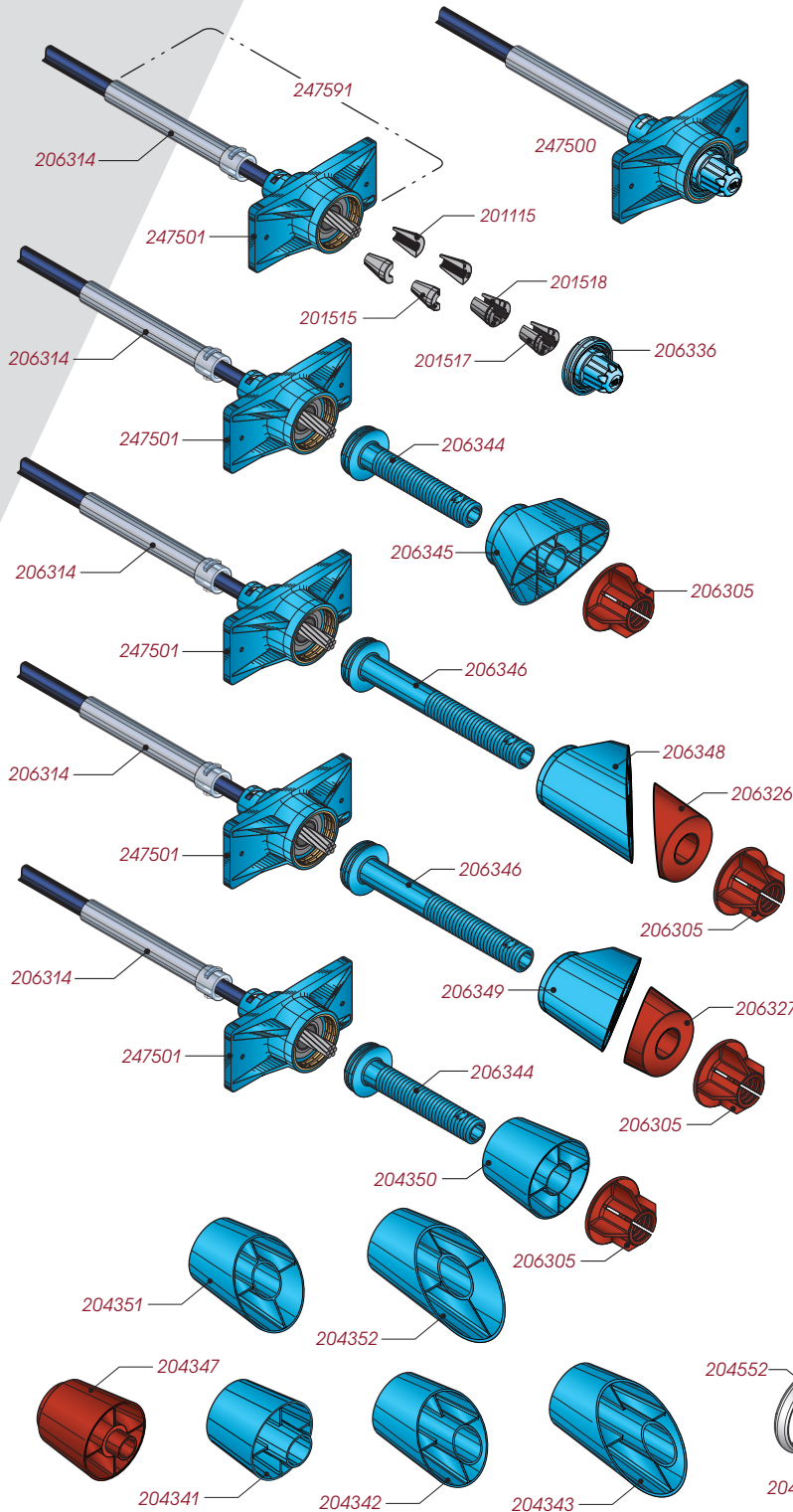




# GTI® 0.5" Zero Void Stressing-End (Metal Ring - Threaded)



GTI® 0.5" ZERO VOID STRESSING-END (METAL RING - THREADED)			
247500	GTI .5" ZERO VOID ENCAPSULATION, METAL RING, THREADED, SET, SM1-05, including		
	247591	GTI .5" ZERO VOID ENCAPSULATION, METAL RING, THREADED & SEAL, SM1-05	
		247501	GTI .5" ZERO VOID ENCAPSULATION, METAL RING, THREADED, SM1-05
		206314	GTI .5" ZERO VOID SEAL, 6", TRANSPARENT
	206336	GTI .5" ZERO VOID LE CAP, THREADED W/GREASE	

FOR WEDGE PART NUMBER SEE WEDGE TABLE

GTI® 0.5" ZERO VOID STRESSING-END POCKET FORMERS (METAL RING - THREADED) (NAIL-LESS SYSTEM)	
206345	GTI .5" ZERO VOID LE NAILLESS POCKET FORMER, PLASMA, BLUE
206348	GTI .5" ZERO VOID POCKET FORMER 45 DEG, PLASMA, BLUE
	206326 GTI .5" Z-VOID POCKET FORMER 45 DEG, NUT SPACER
206349	GTI .5" ZERO VOID POCKET FORMER 30 DEG, PLASMA, BLUE
	206327 GTI .5" Z-VOID POCKET FORMER 30 DEG, NUT SPACER
204350	GTI POCKET FORMER, 5ZV, TMR, T/PS, NO SHANK
204351	GTI POCKET FORMER, 5ZV, TMR, T/PS, 30 DEG, NO SHANK
	206327 GTI .5" Z-VOID POCKET FORMER 30 DEG, NUT SPACER
204352	GTI POCKET FORMER, 5ZV, TMR, T/PS, 45 DEG, NO SHANK
	206326 GTI .5" Z-VOID POCKET FORMER 45 DEG, NUT SPACER

Note: the above pocket formers require a mandrel and nut.

206344	GTI .5" Z-VOID LE NAILLESS POCKET FORMER MANDREL THREADED
206346	GTI .5" Z-VOID LE NAILLESS POCKET FORMER, MANDREL, THREADED LONG
206305	GTI .5" Z-VOID POCKET FORMER, NUT

GTI® 0.5" ZERO-VOID STRESSING-END POCKET FORMERS (METAL RING - THREADED)	
204347	GTI POCKET FORMER, 5ZV, MR, T/PS, 7/8" SHANK
204341	GTI POCKET FORMER, 5ZV, TMR, T/PS, SHANK
204342	GTI POCKET FORMER, 5ZV, TMR, T/PS, 30 DEG, SHANK
204343	GTI POCKET FORMER, 5ZV, TMR, T/PS, 45 DEG, SHANK

GTI® 0.5" ZERO-VOID STRESSING-END POCKET FORMERS (METAL RING - THREADED) (GROUT-LOCK®)	
204379	GTI POCKET FORMER, 5ZV, MR/TMR, 7/8" SHANK, GROUT-LOCK
204552	GTI POCKET FORMER, GROUT-LOCK RING

GTI® WEDGE TABLE			
GTI® Zero Void Anchorage Kits are sold with a variety of wedge types based on customer preference. See table below to determine/identify wedge type.			
A	201115	GTI WEDGE, 2 PIECE .5", 1.2" LONG	
B	201515	GTI S1-05 2-PIECE WEDGE, 1.2" LONG	
C	201518	GTI S1-05 2-PIECE WEDGE, W/CLIP	
D	201517	GTI S1-05 2 PIECE WEDGE, W/CLIP, SMOOTH	